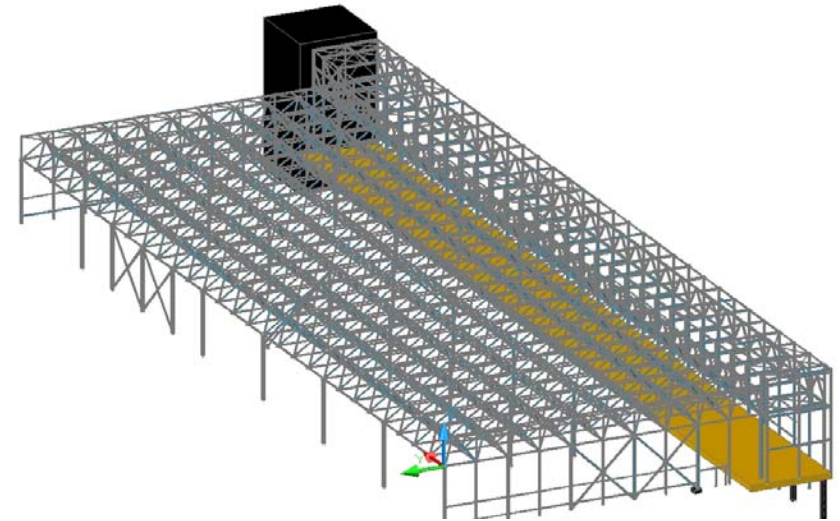


## *Audi's new production hall*

Audi's new production hall N24 was created by experts in buildings, bridges and plants. The production hall has a three-dimensional roof structure made from single bars and nodes. A room for technical activities, which was built next to this construction, was created with trusses.



### **Stahlbau Wegscheid GmbH**

- > Experts in buildings, bridges and plants
- > Founded in 1997
- > 85 employees
- > 4 workstations for Advance Steel
- > Other projects: Porsche-Arena Stuttgart, Arch bridge Nordheim, Front entrance steel hall München

Stahlbau Wegscheid  
Stahl- Anlagen- Maschinen- Brückenbau



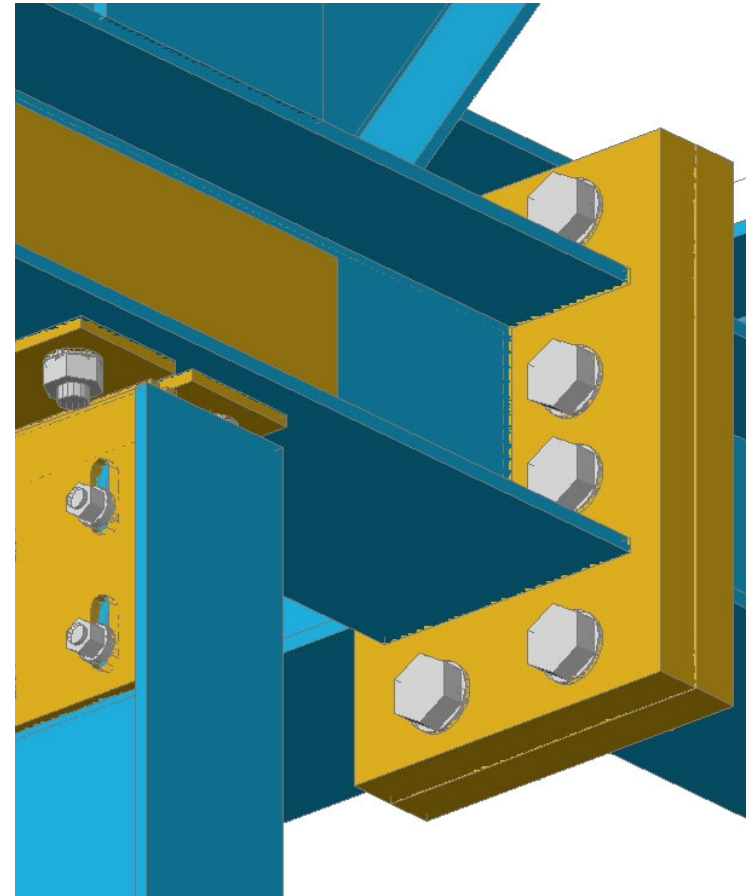
> ADVANCE

## *Project characteristics*

- > Change from “SDDP” to “Advance Steel”
- > The ability to work with an unlimited number of parts

## *Solutions*

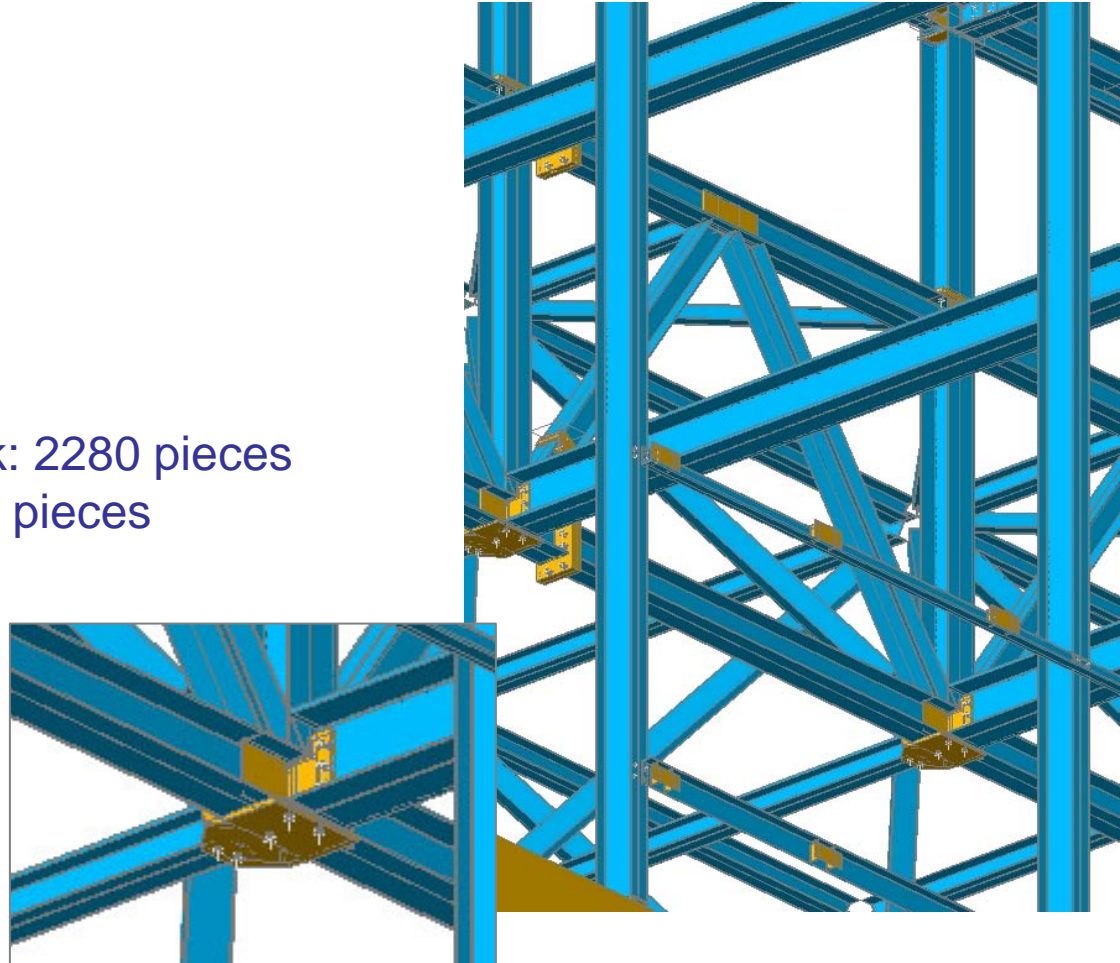
- > Software used: **Advance Steel**
- > Excellent 3D-modeling and automatic updates of manual changes in all technical documents



> ADVANCE

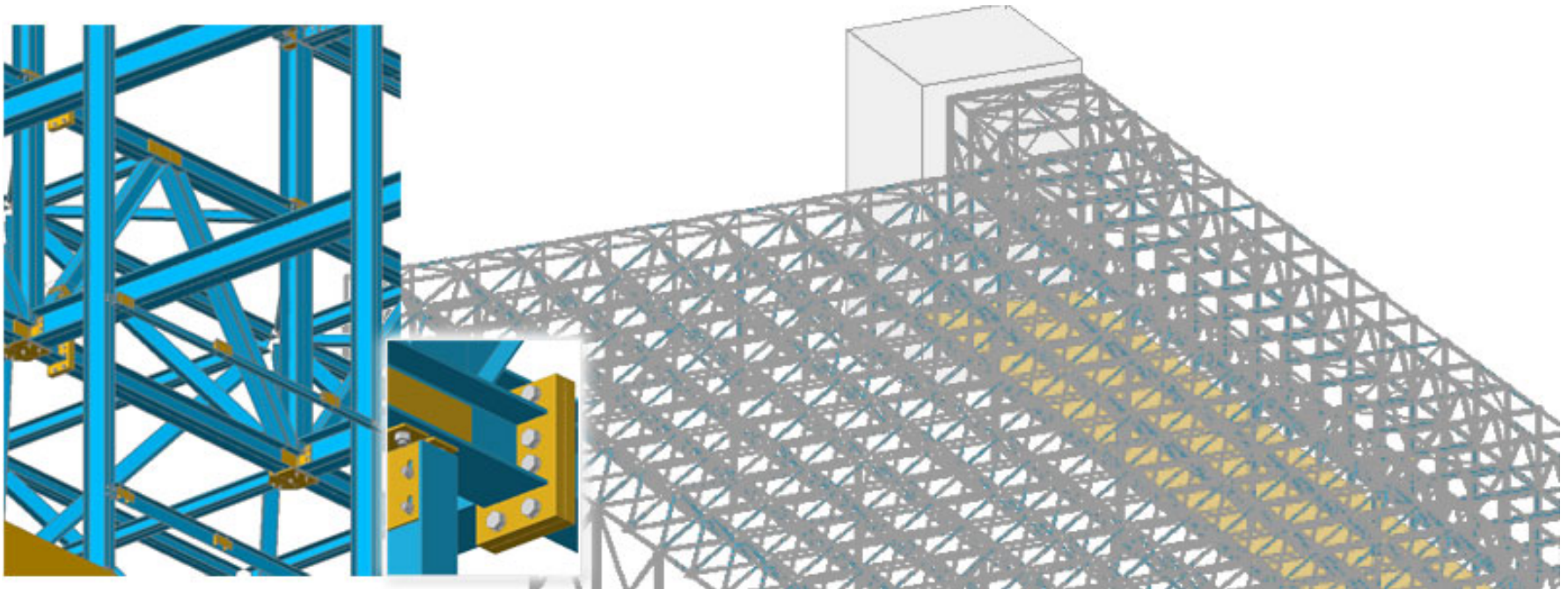
## Specification:

- Height: 20 m
- Surface: 115 m x 50 m
- Weight: 550 tons
- Single bars 3D framework: 2280 pieces
- Joints 3D framework: 570 pieces



> ADVANCE





For Mr. Andreas Obermaier: “The excellent 3D-modeling, the automatic updates of manual changes in all technical documents and last but not least the good price-performance ratio of this software convinced us.”

[www.stahlbau-wegscheid.de](http://www.stahlbau-wegscheid.de)

[www.graitec.com](http://www.graitec.com)

> ADVANCE