

THE THEATRE ROYAL MODERNISATION

NORWICH, NORFOLK - UK

► THE PROJECT

The project is part of a comprehensive modernization program concerning the Theatre Royal of Norwich. The modifications made by TSI Structures Ltd. included extending the auditorium circle by 3 metres; strengthening of the existing structure & entrance façade in order to allow the installation of a continuous steel balcony with back light advertising boards and canopy.

■ Project characteristics

- Modification of the existing steel structure, in place since the 1930's
- The extension of the circle balcony by 3 metres
- The original spliced beams sloped and raked at different angles

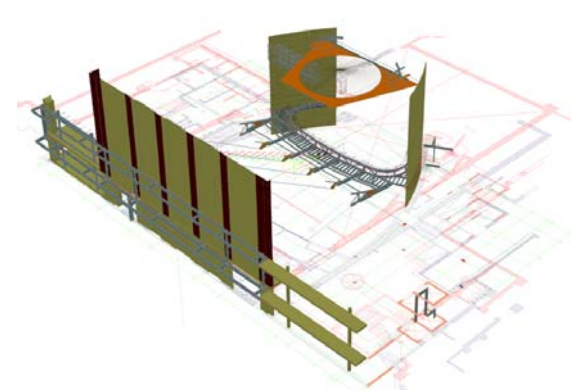
■ Solutions

Software used: Advance Steel

- Ease of modelling of complex structures
- Transfer of ACAD poly lines into curved and faceted beams
- Simple plotting of the survey information



► QUESTIONS TO MR. NICK THOMPSON, MANAGER OF TSI STRUCTURES LTD.



Mr. Thompson, can you provide us a few details about the project?

The project involved the installation of approximately 30 tonnes of steel into an existing 1930's theatre building, most of which had to be manoeuvred into position by hand (or many hands). Steel was brought in through the rear of the stage normally reserved for scenery; each member was then wheeled across the stage on small trolleys onto a maze of scaffold platforms then winched up to the higher level platform before fixing into place.

Which were the most significant challenges?

The most interesting and complicated area was the extension of the circle balcony. This was detailed and manufactured in small sections to allow us to manhandle. These members were temporarily bolted into position until all steel elements were in position. Final levelling could then be completed. Once we were happy that all steel handrail support beams and floor plates were in the correct location, the entire balcony frame was site welded together.

Why did you decide on Advance Steel?

As many of your other customers would agree, for easy of use, the speed at which complicated models can be detailed and how simple it is to add custom objects into the system.

Advance Steel was a key element in enabling us to achieve the required delivery, due to its easy of modelling complex structures and environments. From the outset we knew Advance Steel had all of the qualities that we require; to model new build and modernisation projects of this complicated nature and to simply plot survey information.

TSI Structures Ltd.

Enterprise House, Dewing Road, Rackheath
Norwich, Norfolk NR13 6PS
Tel.: 01603 720031
Fax: 01603 720765