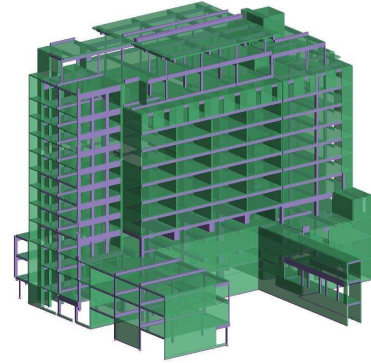


# HOSPITAL EXTENSION LA-ROCHE-SUR-YON

Sigma Ingénierie  
Le Mans, France

## PROJECT DESCRIPTION

- Architecture office: NMS Architecture Ingénierie
- Master builder: BGCV
- Location: La Roche-sur-Yon, France
- Dimensions: 13-level building erected between two existing buildings
- Specifications: Need to create 3 concrete frames in order to build an extension over 2 existing buildings still in use.



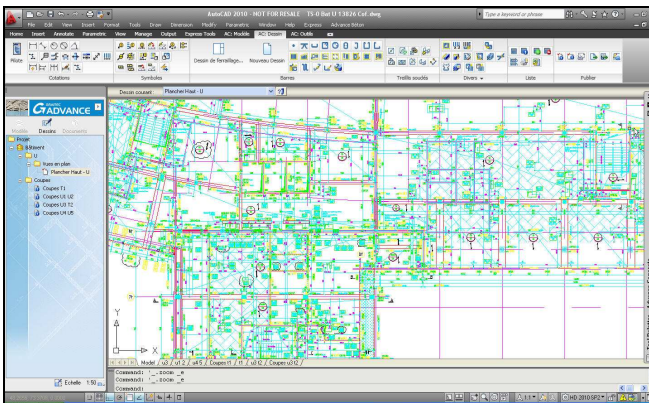
## THE CHALLENGE

- 3D modeling of the building
- Optimization of all elements
- Modeling of the concrete frame
- Creation of the formwork drawings



## THE SOLUTION

- Modeling of the building and optimization of all elements
- Modeling of the concrete frame with Advance Design
- Creation of framework drawings with Advance Concrete



*"Advance Design and Advance Concrete help viewing the building in 3D and optimizing our productivity both from the design and the drawing point of views. The software enables intuitive and user friendly data processing which shortens the adaptation time."*

Nicolas BRETON – Denis LAMBERT,  
SIGMA INGENIERIE - 72000 LE MANS

## USERS' BENEFITS

- Easy document conception (layouts and calculations)
- Limited error risks (with the automatic numbering)
- Calculations for a whole concrete frame with one single computer program