

PROFESIONAL CONSTRUCT PROIECTARE

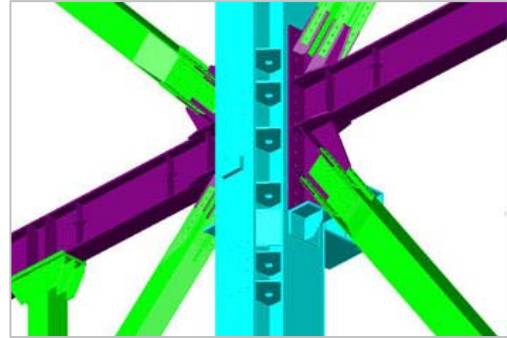
Installation for gas desulfurization with pumps and blowers

Rovinari Electrical Plant, Romania



Project description

- **Location:** Rovinari, Romania
- **Dimensions:** The structure has 36.90 m (width) x 31.50 m (length) and a height of 50 m. The resistance structure of the entire project consists of 3 areas:
 - Absorber - 24.65 m x 24.81 m x 50.00 m
 - Station for pumps and blowers - 12.25 m x 25.35 m x 17.87 m
 - House for elevator, scale and process tanks - 24.65 m x 6.69 m x 37.05 m.



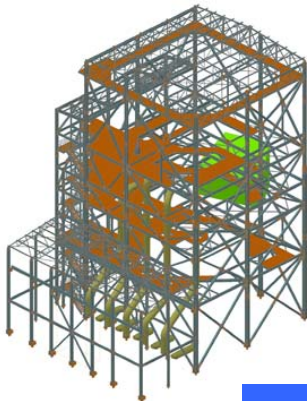
The challenge

- Reducing steel consumption necessary for the equipment with impressive dimensions that only functions in an atmosphere with controlled temperature, humidity and air quality.
- Creating a system of horizontal bracings for the rigid disks at platform level, that supports the technological equipment with large dimensions and cylindrical shape located inside of the structure.



The solution

- Use of dynamic analyses, of constructive concepts and creating horizontal connections at technological bridges level using Advance Steel tools.
- Easy modeling of sloped elements at roof level and of platforms using Advance Steel tools for advanced 3D modeling.



*"We have been using Advance Steel for over 4 years. The 3D viewer allows identifying problems, collision detection and evaluating the possibilities to implement our ideas to the structure. Models of large dimensions can be handled easily due to the **Multi-User** system that gives us the possibility to save a lot of time."*

Mr. Dan BATCA, Project Manager
PROFESIONAL CONSTRUCT PROIECTARE

Users' Benefits

- Increased productivity
- Complex projects finalized in a short time
- Easy modeling

ADVANCE STEEL



More projects on www.graitec.com