

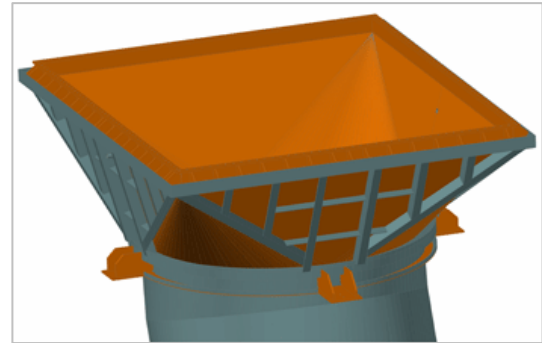
AIR INTAKE

Planungsbüro Heuer
Hattingen, Germany



Project description

- **Location:** Canada
- **Contracting authority:** Shell Canada
- **Dimensions:** 1,200 mm wide x 3,800 mm high compensator connection, cylindrical pieces with a rectangular cross section of 4,200 mm (width) x 5,100 mm (height)
- **Specifications:** rectangular pieces of channels with a diameter of 3,400 mm



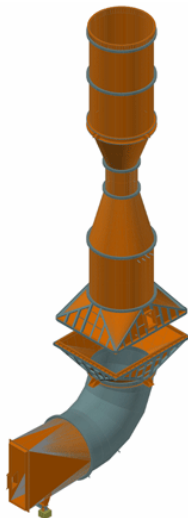
The challenge

- Need to have the parts unreeled as a sheet metal construction



The solution

- 3D CAD system
- Automatic functions to get conical parts
- All workshop drawings



"Advance Steel allowed us to process the entire 3D model data, accelerate the creation of all documents and ensured an all-around drawing consistency"

Mr. Heuer, Construction Engineer

User benefits

- Efficient and precise 3D modelling
- Easy-to-learn and easy-to-handle solution
- Special sheet metal functions

ADVANCE STEEL



More projects on www.graitec.com