

NEW EXHIBITION CENTRE HALL

OKF, s.r.o.
Brno, Czech Republic



Project description

- **Location:** Brno, Czech Republic
- **Architecture office:** Arch Design, s.r.o.
- **Contracting authority:** BVV Brno, a.s.
- **Dimensions:** 220,3 m × 89,5 m
- **Specifications:** The new hall „P“ in the Brno exhibition centre
- **Description:** The exhibition part of pavilion „P“ is designed as a two-aisle, one-storey hall with the possibility to parcel into separate parts.



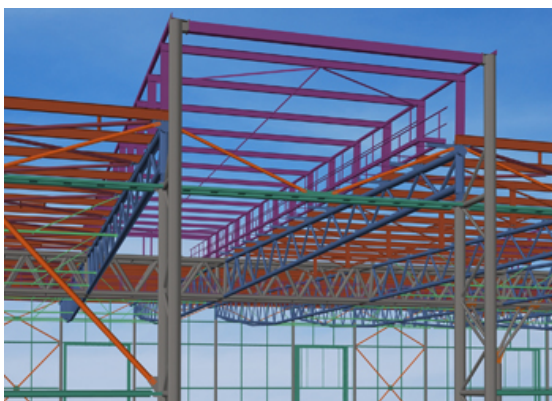
Business issues

- **Manufacturing** – The biggest problem with this building was the intersections of tube diagonals with the upper/lower strip of truss beams/girder and welding preparations.



The solution

- Tube diagonals were manufactured directly from the 3D model exploded to ACIS solids.



„With Advance Steel, the 3D modelling of steel frameworks of „Pavilion P“ enabled the realization of the model complexity and the detail control in the workshop documentation. To expedite the tube structure fabrication, the information from the 3D was directly used for the fabrication of particular elements. Using Advance Steel improved the demanding deadlines both for the project and for the steel structure delivery period.“

Vladimir Daněk, Michal Rudolf, OKF s.r.o.,
Technical designers

Business results

- **Error reduction** – controlling the model in 3D
 - BOMs derived from the model
- **Manufacturing directly from the 3D model**

ADVANCE STEEL



More projects on www.graitec.com