

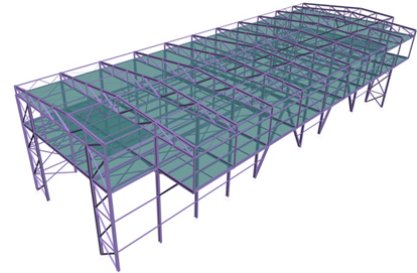
MANUFACTURE HALL

Biuro Inżynierskie Michał Nowicki &
Biuro Inżynierskie Tomasz Białek
Poland



PROJECT DESCRIPTION

- Location: Poland
- Software used: Advance Design, Advance Steel
- Dimensions: in plain view 24,70 x 64,00 m, height 15,80 m



THE CHALLENGE

- Steel construction made of 12 frames which creates one level of superstructure to existing manufacture hall.



THE SOLUTION

- Advance Design has user friendly interface which is very useful and intuitive in structure modeling – possibility to prepare clear and complete F.E. model for analysis.
- Possibility of preparing static calculation results in very attractive graphical form.
- Easy model transfer and synchronization between Advance Design and Advance Steel.



" Make use of interoperability between Advance Design and Advance Steel makes calculation and detailing processes very quick and efficient. Moreover, Advance software supports designer in case of any changes in the model and documentation during all stages of the project cycle."

*Mr. Michał Nowicki,
Designer*

USERS' BENEFITS

- A lot of drawing styles for many different types of drawings
- Drawings and BOM's automatic update function

ADVANCE DESIGN, ADVANCE STEEL