

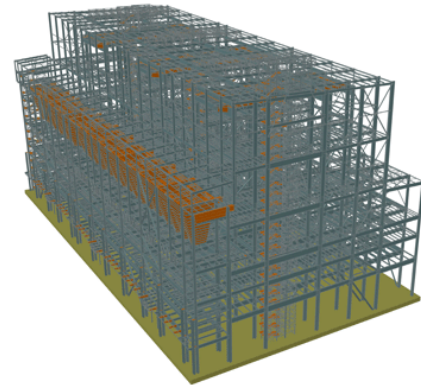
VERIFIED 3D MODEL OF STEEL STRUCTURE OF PRUNEROV II POWER PLANT

Noving Ltd
Vitkovice, Czech Republic



Project description

- **Location:** Prunerov II, Czech Republic
- **Architecture office:** Viktovice Power Engineering
- **Contracting authority:** CEZ
- **Dimensions:** 250 × 80 × 80 m
- **Specifications:** 25.000 tons of steel structure



The challenge

- Need to measure, check and create the model from more than 30.000 elements (beams, columns, bracing)
- Size of the task



The solution

- Part of these elements accessible for classical measurement
- Part measured by optical methods using geodetic total station
- In modelling, the total model was broken into logical parts linked together as AutoCAD external references "xref"



"The project required to combine our own measurement evaluation software with Advance Steel. Without Advance Steel we would not have been able to handle the whole project."

Mr. Novotny, Managing Director

Users' benefits

- Reduction of errors
- Possibility to share full objects data across platform
- Ease of design changes

ADVANCE STEEL



More projects on www.graitec.com