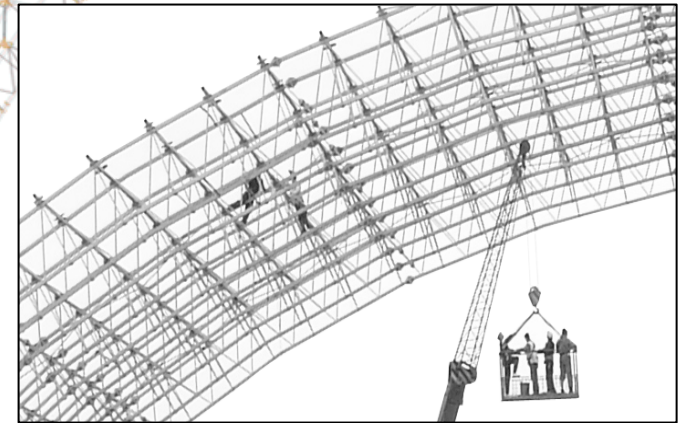
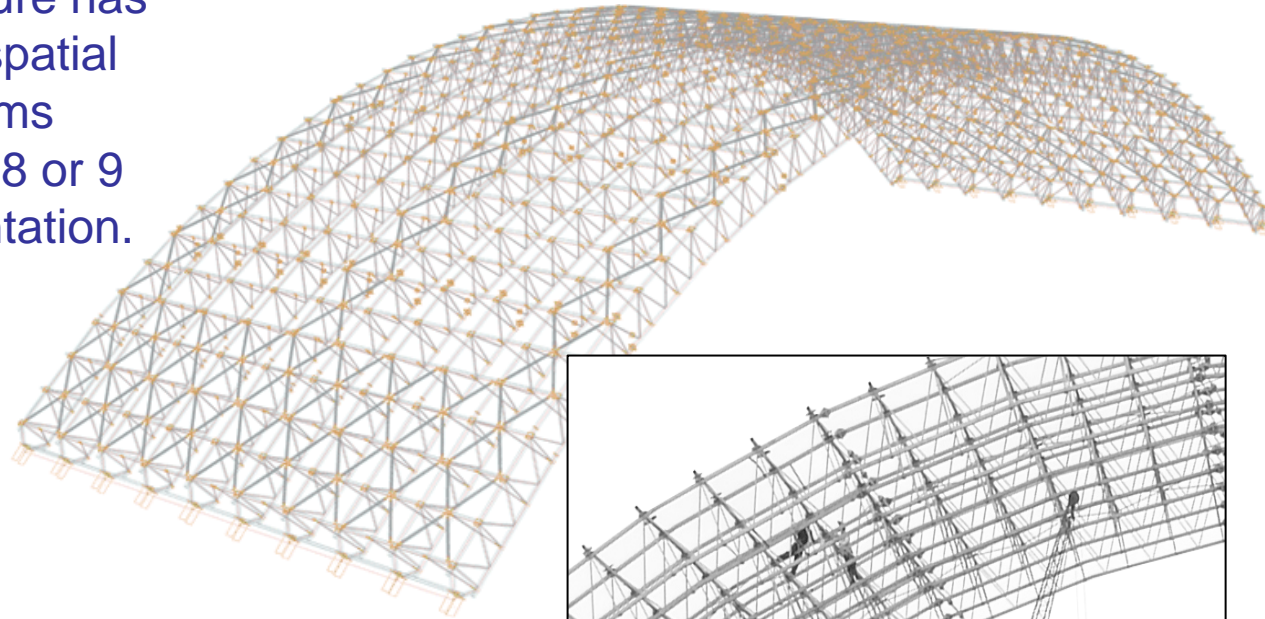


Warehouse for explosive products

As you can see, the structure has a pretentious geometry – spatial arc, built from straight beams connected with joints of 7, 8 or 9 bracings with various orientation.



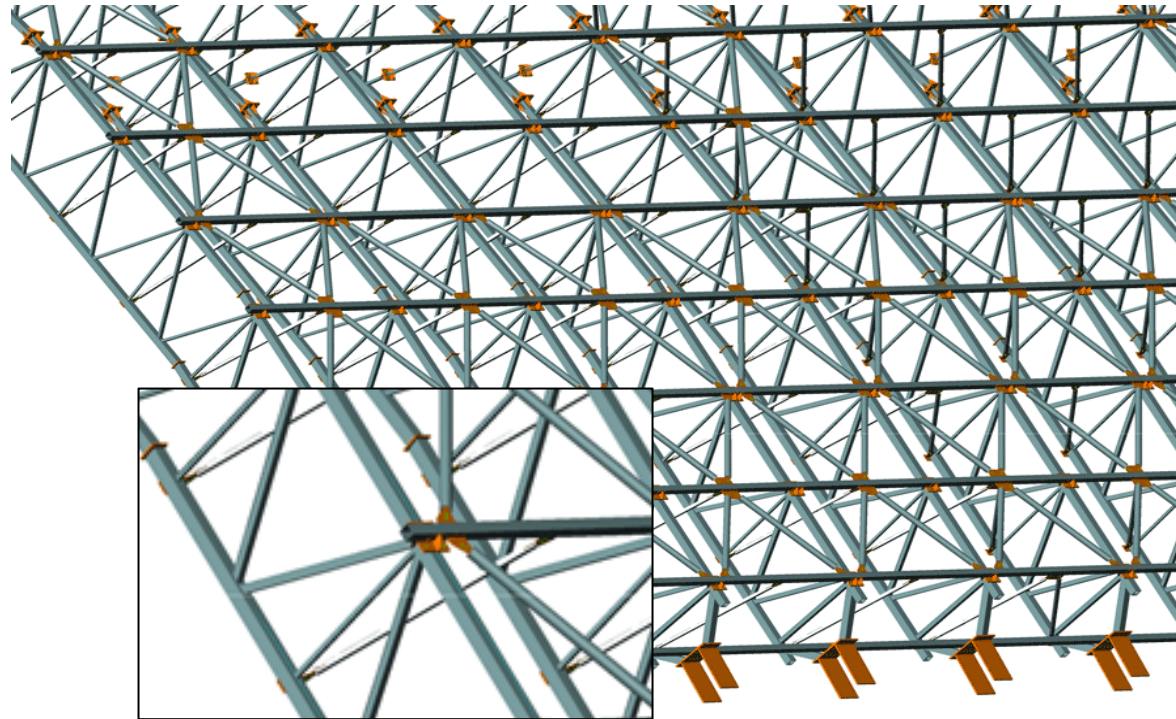
N-CAD

- > Founded in 2005
- > Other projects: supermarket Spar, Bucharest, Romania

> ADVANCE

Project characteristics

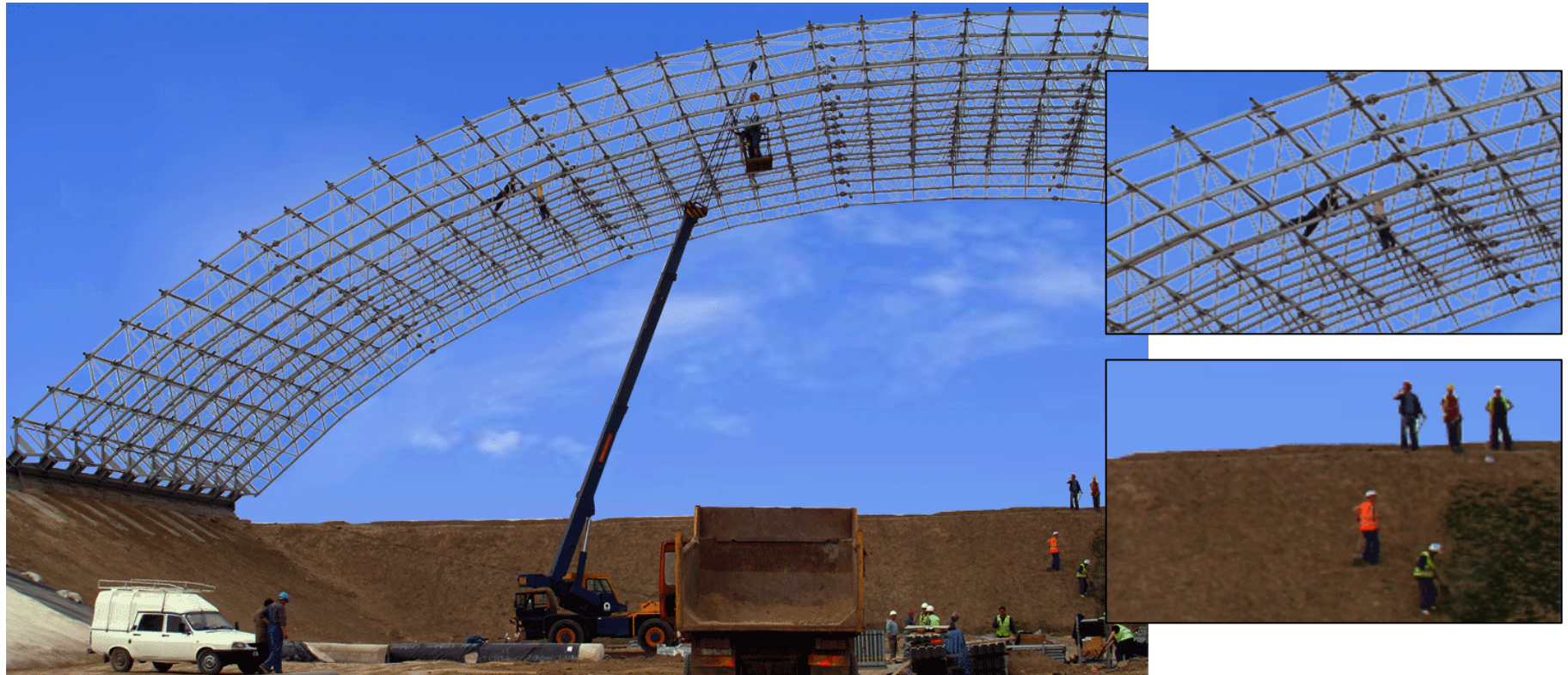
- > Arc structure, built from straight beams
- > Sliding roof
- > Bolted connections on site



Solutions

- > Software used : **Advance Steel**
- > 3D joint modeling
- > Automated drawing creation

> ADVANCE



For E. G. NESTOR: «Designing such a structure in less than 3 weeks is a success achieved entirely due to Advance Steel. It would be almost impossible to handle such a project without dedicated software like Advance Steel.»

> ADVANCE