

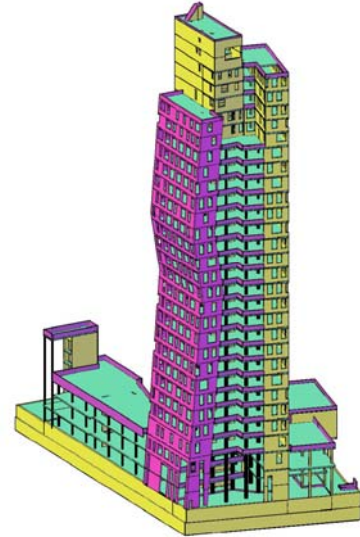
# AZ-TOWER BRNO

JAPE-projekt, spol. s.r.o.  
Brno, Czech Republic



## PROJECT DESCRIPTION

- Location: Brno, Czech Republic
- Contracting authority: AZ PROPERITY
- Dimensions: basement 104.5m x 61.7m, tower 29.0m x 25.0m, highest point of reinforced concrete tower 101.4m.
- Specifications: Commercial Complex, Offices, Flats.
- Description: Reinforced concrete structure with supporting columns and concrete bracing cores around staircase shafts. East foreside wall is three times cranked.



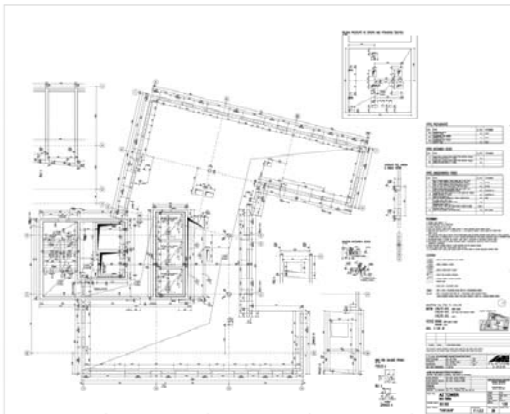
## THE CHALLENGE

- Original project in a short time with the need for rapid creation of "bill of materials"



## THE SOLUTION

- Investor had in-time overview of "bill of materials"



*"Advance Concrete allowed us to work with the last changes at the last minute. Advance Concrete still respects the project deadlines and has a permanent overview of quantity of consumed concrete and area of used shutter"*

Ing. Jan PERLA,  
Managing Director

## USERS' BENEFITS

- Changes are immediately reflected in the BOM

ADVANCE CONCRETE