

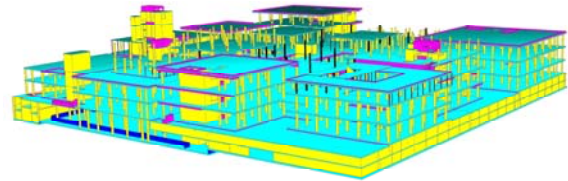
# OC NOVA KAROLINA

JAPE-projekt, spol. s.r.o.  
Ostrava, Czech Republic



## PROJECT DESCRIPTION

- Location: Ostrava, Czech Republic
- Contracting authority: MULTI development
- Dimensions: 170.5 X 170.5m, height 25.5m, locally up to 40.6m
- Specifications: Commercial Complex
- Description: Reinforced concrete structure with supporting columns and concrete bracing cores around staircase shafts.



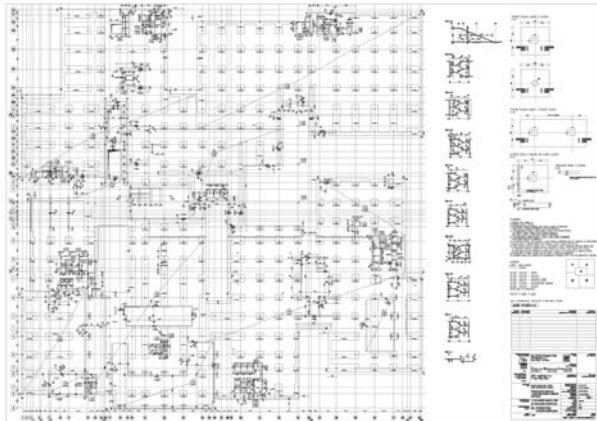
## THE CHALLENGE

- Enormous project to be done in a short time in order to quickly get layouts and material quantities



## THE SOLUTION

- Materials created from the 3D model



*"Advance Concrete allowed us to work with the last changes at the last minute. Advance Concrete still respects the project deadlines and has a permanent overview of quantity of consumed concrete and area of used shutter."*

Ing. Jan PERLA,  
Managing Director

## USERS' BENEFITS

- Changes are immediately reflected in the BOM

ADVANCE CONCRETE