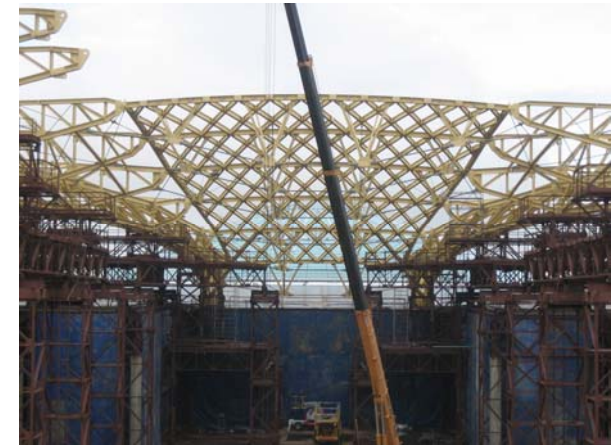


Customer

Heinrich Lamparter Stahlbau & Co. KG GmbH
Kassel, Germany

Business issues

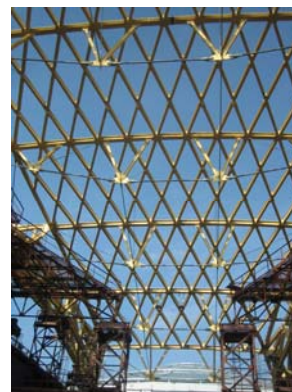
- Needed a Multilanguage solution
- Create steel elements to the compulsory maximum unit weight.
- Observation of geometric boundary conditions for the assembly
- The need to create compensatory tolerances that could appear during the assembly



"In Advance Steel the model is created with real dimensions thus making it possible to easily deal with complex situations that can occur during the assembly phase "

Business results

- 3D modelling
- Ability to create the roof construction ready for fabrication
- Advance Steel is available in multiple languages



Mr. Linge, Manager of the Engineering Department