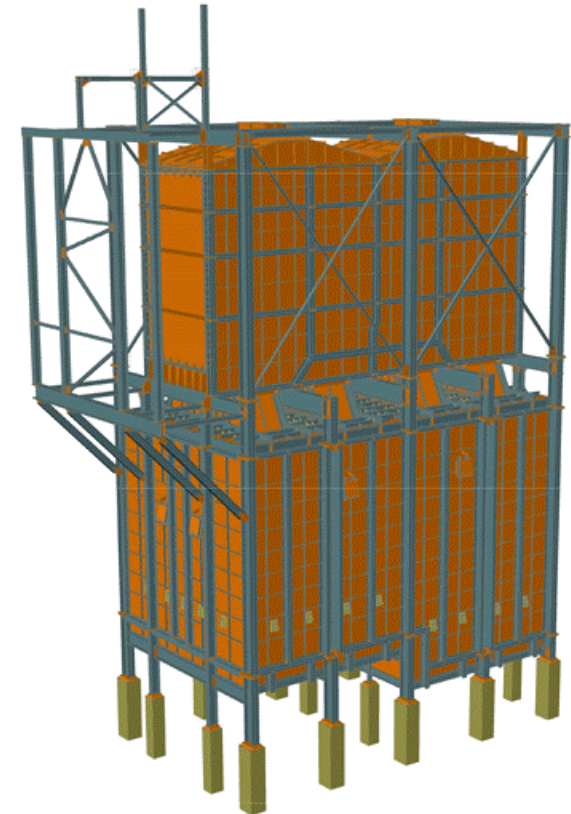


## *Booster heater - Schwedt, Germany*

The booster heater has a steel structure split into two sections - convection and radiation - built with beams and welded prefabricated panels.



HEURTEY PETROCHEM

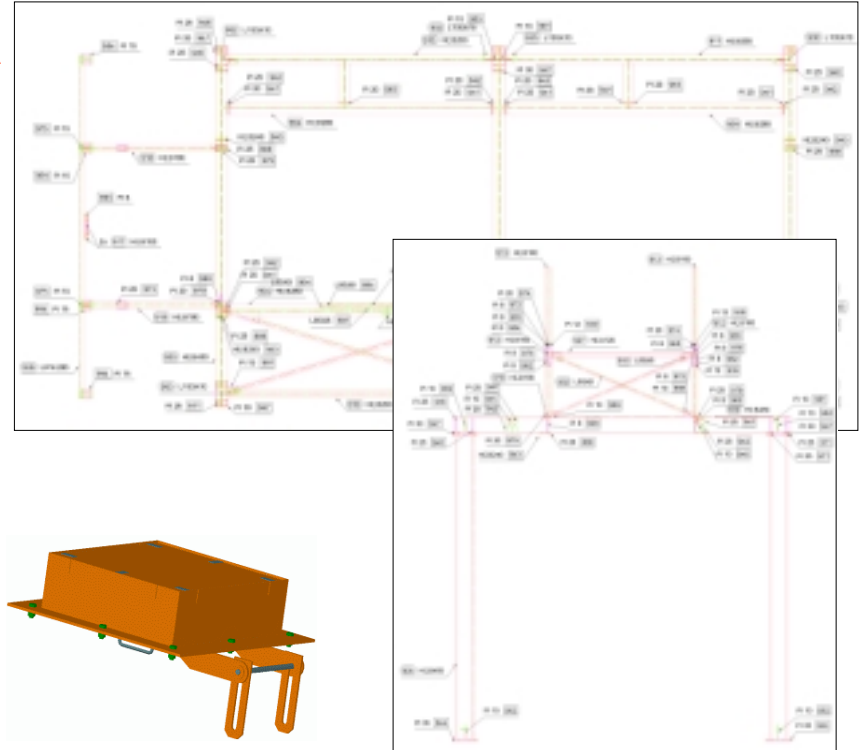
### Heurtey Petrochem

- > Founded in 1953; the Romanian branch was founded in 2000
- > The group is specialized in design and fabrication of tubular process fired heaters dedicated to the hydrocarbon industries.
- > More than 2000 process fired heaters, furnances and reformers worldwide

> ADVANCE

## *Project characteristics*

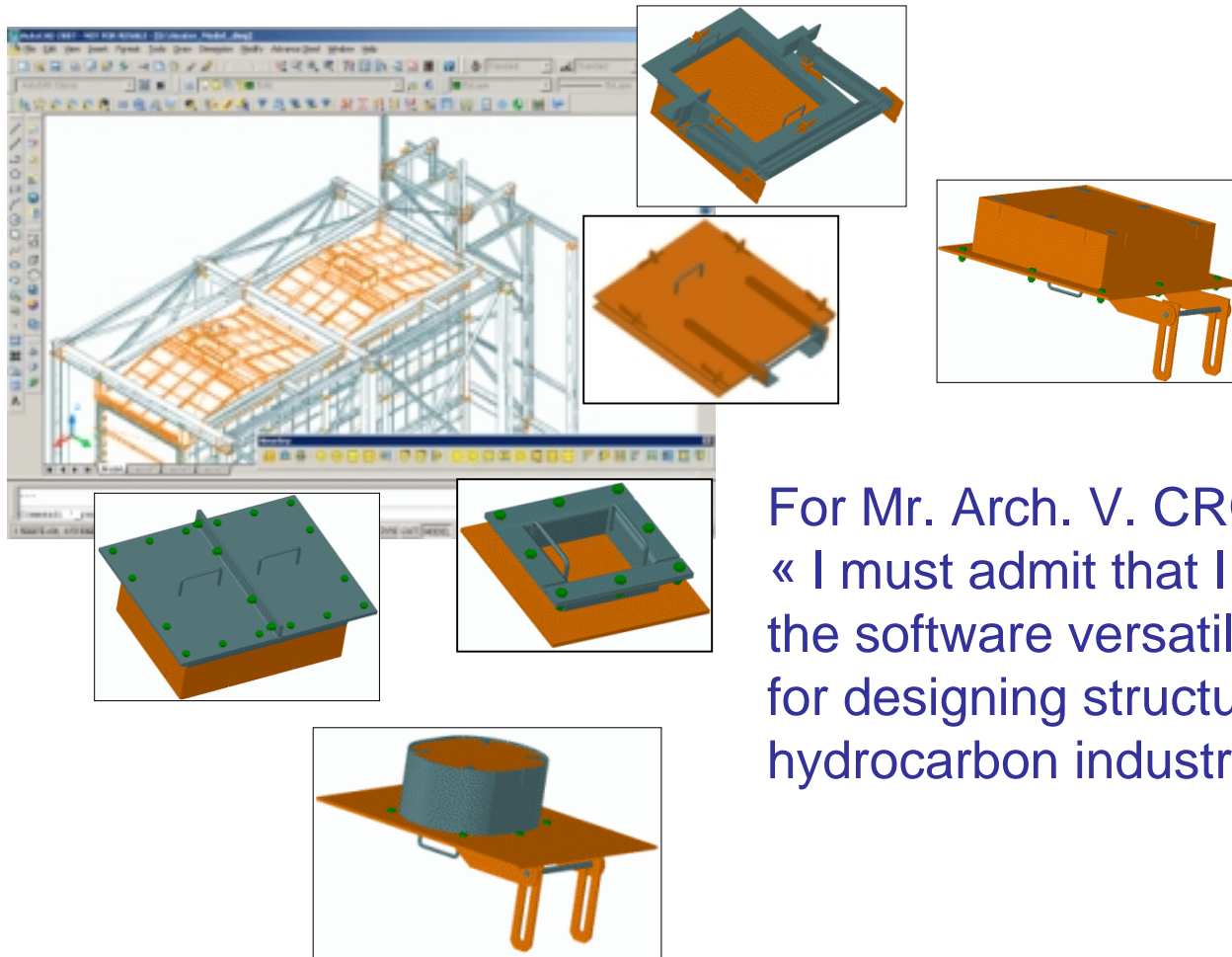
- > Specific steel structure for the petrochemical industry
- > Special connections
- > Specific drawing presentation needed



## *Solutions*

- > Software used: **Advance Steel**
- > Specific connection were developed
- > Specific "Drawing Styles" were configured to get automatic output

> ADVANCE



For Mr. Arch. V. CROITORU:  
« I must admit that I was impressed with the software versatility and the flexibility for designing structures for the hydrocarbon industry. »

> ADVANCE