

BOOSTER HEATER 3V-3

Schwedt - Germany

▶ THE PROJECT

The booster heater has a steel structure split into two sections – convection and radiation – built with beams and welded prefabricated panels

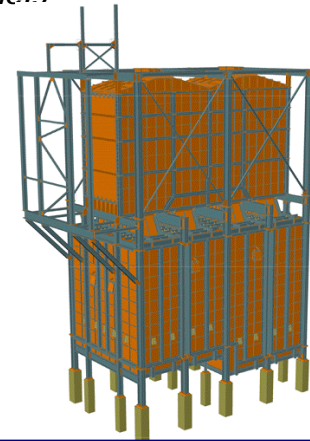
■ Project characteristics

- > Specific steel structure for the petrochemical industry
- > Special connections
- > Specific drawing presentations needed

■ Solutions

Software used: Advance Steel

- > Specific connections were developed
- > Specific “Drawing Styles” were configured to get automatic output



▶ QUESTIONS TO ARCH. V. CROITORU, PROJECT MANAGER AT HEURTEY PETROCHEM ROMANIA

Mr. Arch. Victor Croitoru, can you tell us a few words about the Heurtey Petrochem group?

Founded in 1953, Heurtey Petrochem is specialized in design and fabrication of tubular process fired heaters dedicated to the hydrocarbon industries. The Romanian branch was founded in 2000 and we are working in an international environment for worldwide projects.

What was GRAITEC's role in adapting Advance Steel to your company needs?

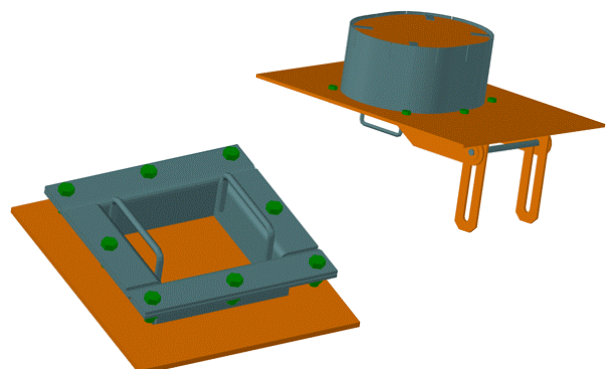
Advance Steel has the ability to add custom connections. GRAITEC developed several custom connections specifically for our company: highly customizable “doors” type joints (various hinges, handles and tubes made up of folded plates and curved beams). Using these connections we reduced the time we spent in designing structures and we obtained a quick return on investment.

Also, in order to improve cooperation between our departments and subsidiaries, GRAITEC finalized the import/export to Staad – structural design software.

Following our requests, GRAITEC added all profiles and drawing styles necessary to our particular field.

So, what is your general feeling about Advance Steel?

I must admit that I was impressed with the software versatility and the flexibility for designing structures for the hydrocarbon industry.



HEURTEY PETROCHEM ROMANIA

Șoseaua Iancului No. 48 Et. 3
Sector 2, Bucharest
ROMANIA
Tel: 40 (21) 250 70 63



Other projects on www.graitec.com