

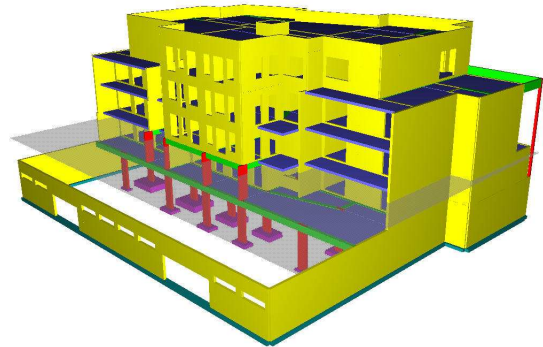
SCCV Nathalie

Finaxiome
Amiens, France



PROJECT DESCRIPTION

- Location: Le Havre, France
- Dimensions: R+3 with a basement of 2 100 m²
- Specifications: The project consists of the creation of 28 residences with a half buried basement, a flat roof and superficial foundations



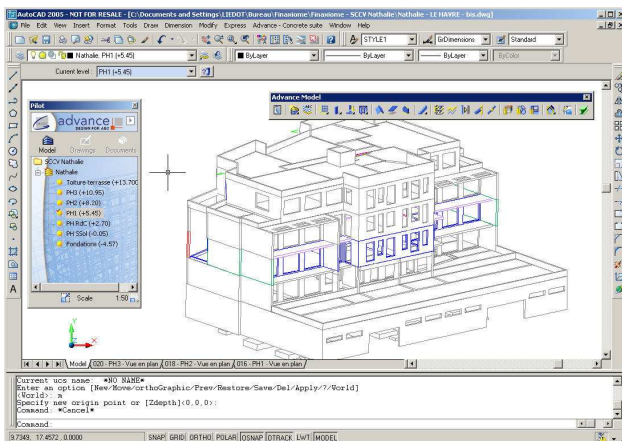
THE CHALLENGE

- The front, external and interior walls do not lead at all to the basement
- Retaining wall on the street side, built in 2m alternate bays
- Numerous openings



THE SOLUTION

- Easy and fast 3D modeling of the building
- Creation and optimization of all the reinforcement drawings with Advance Concrete
- Automatic creation of precise construction drawings



"The software is really easy to use. The main advantage of Advance Concrete is the high productivity. We also gain quality due to its 3D modeling."

Mr. BOURGEOIS,
Design Office Manager, FINAXIOME

USERS' BENEFITS

- Easy 3D modeling
- Low error rate
- Significant time saving

ADVANCE CONCRETE