

SCCV Nathalie (2005)

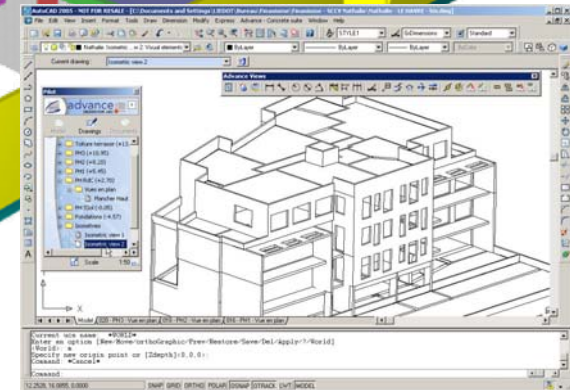
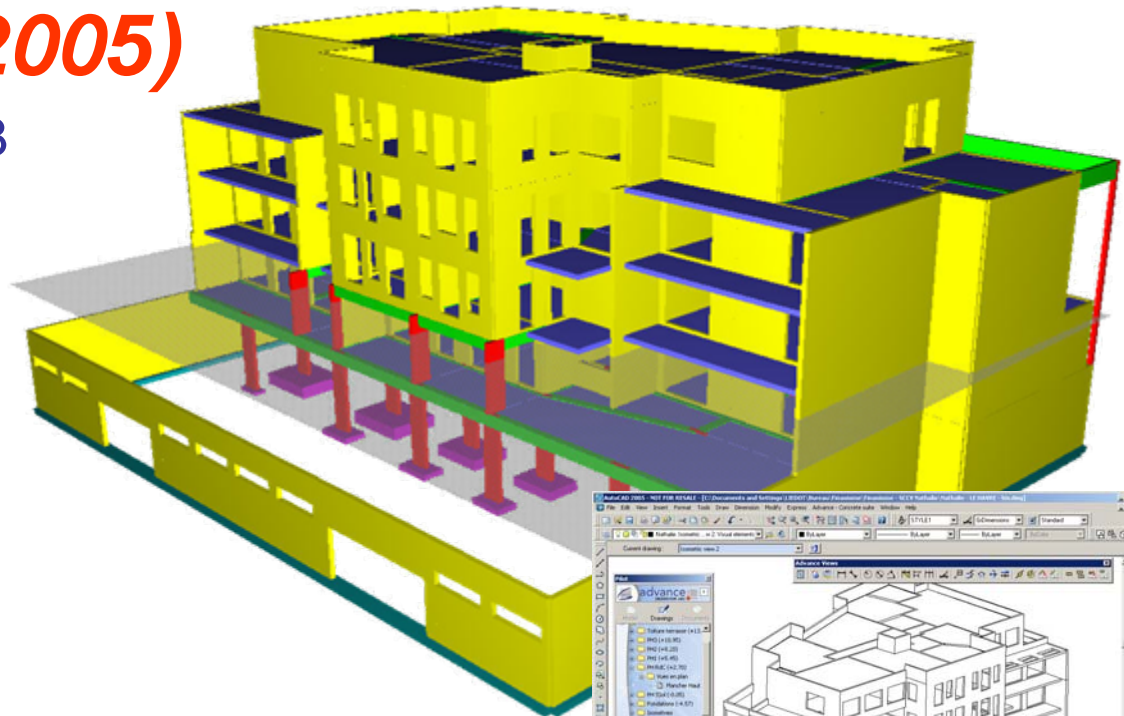
28 residences at Havre. R+3
with a basement 2100 m².



Finaxiome

FINAXIOME

- > Founded in 2003
- > Tax-free real estate products
- > More than 200 employees (Jan 2006)
- > 6 Advance and 2 Arche stations
- > Projets: « Jardin des peintres » at Amiens (250 residences), « Eloïse » at Arras (130 residences).



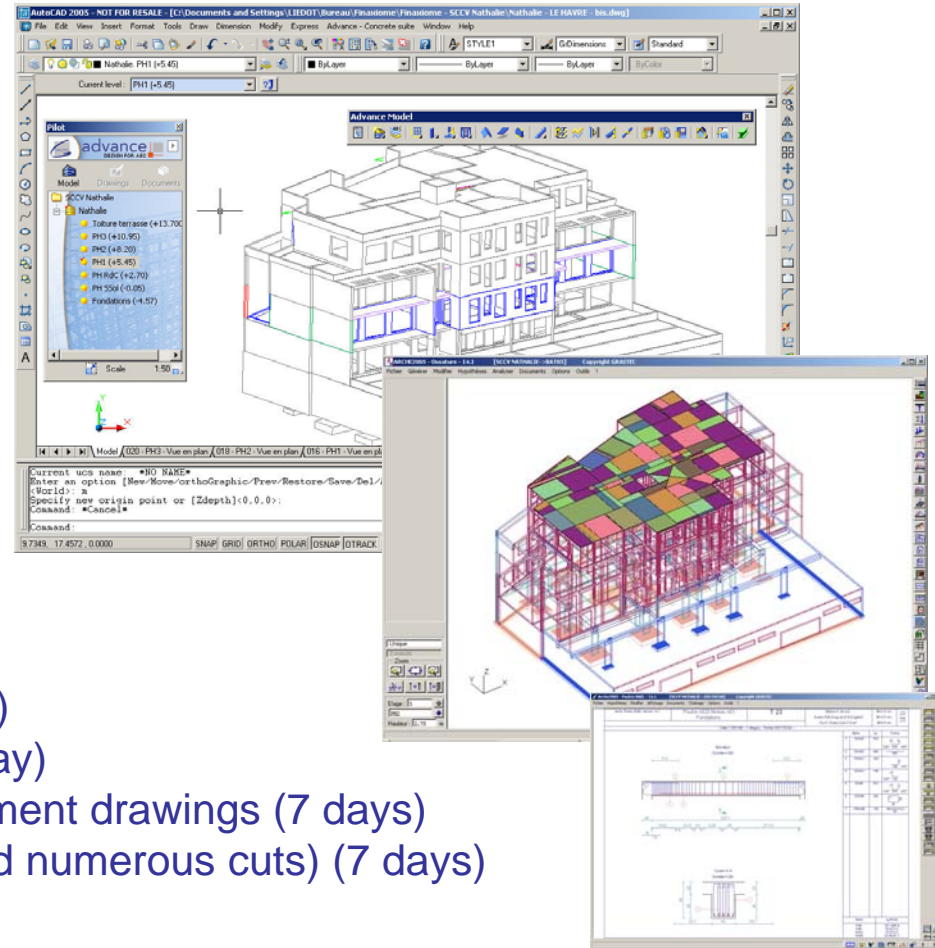
> ADVANCE / ARCHE

Particularities

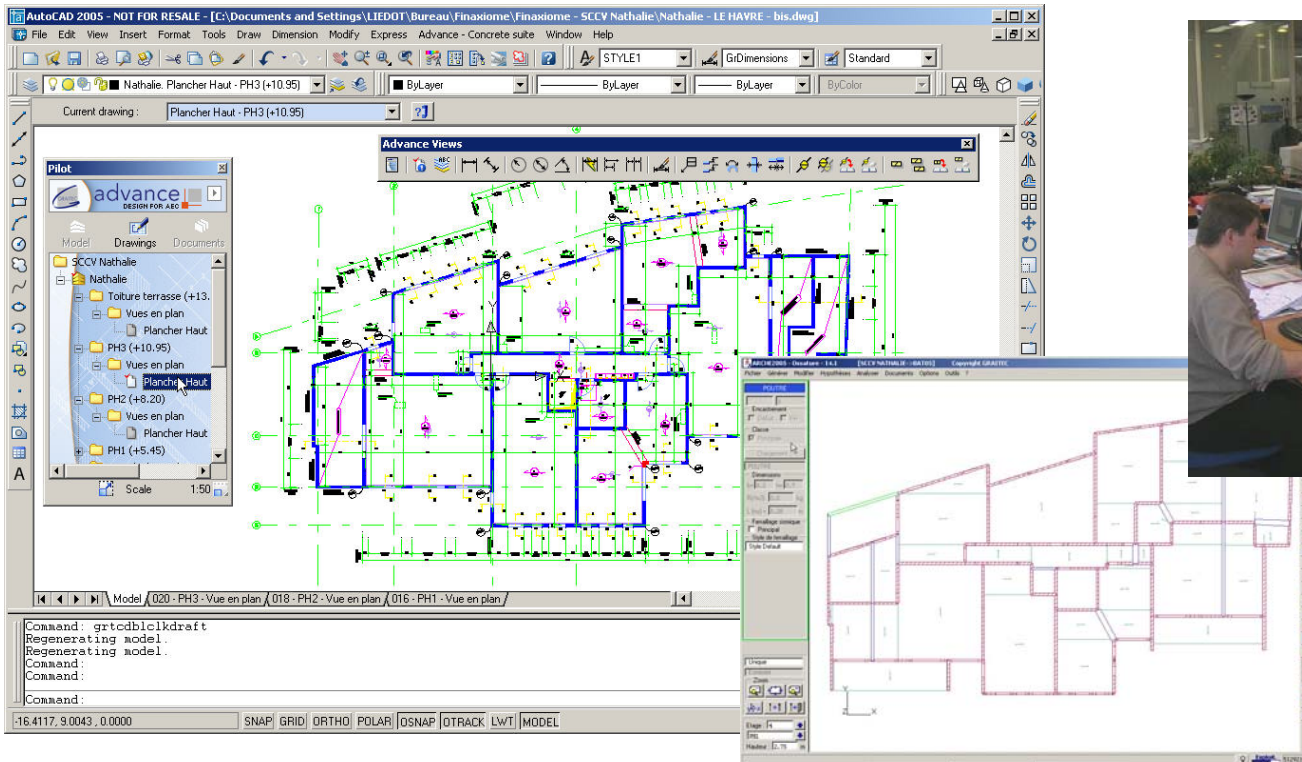
- > Construction floor: the front and the interior walls do not lead at all to the basement.
- > Retaining wall on the street, created by 2m alternating passes

Solutions

- > Software used: **Advance** and **Arche**
- Modeling of 2100 m² in Advance (2 to 3 days)
- Transfer to Arche and model finalization (1 day)
- Optimization and creation of all the reinforcement drawings (7 days)
- Construction drawings creation (drawings and numerous cuts) (7 days)



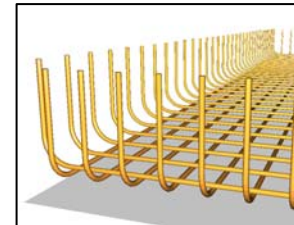
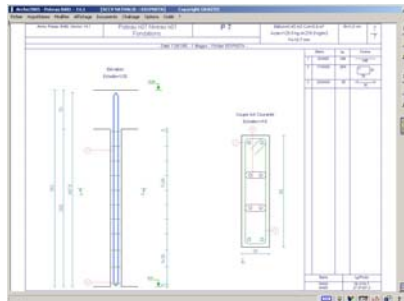
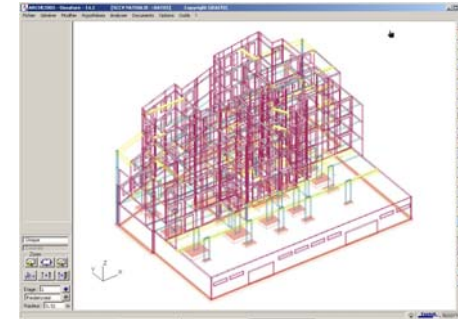
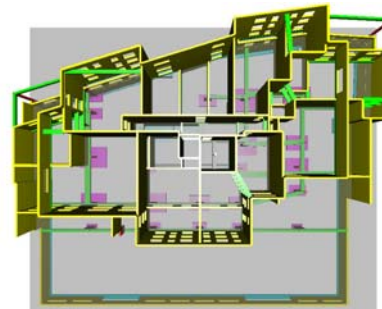
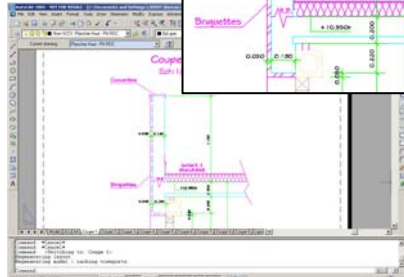
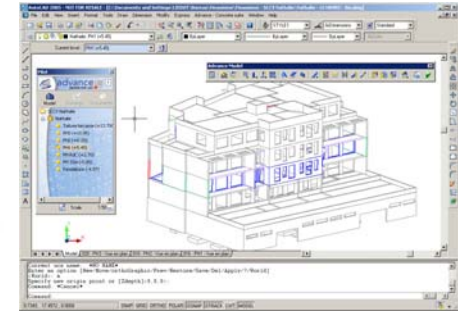
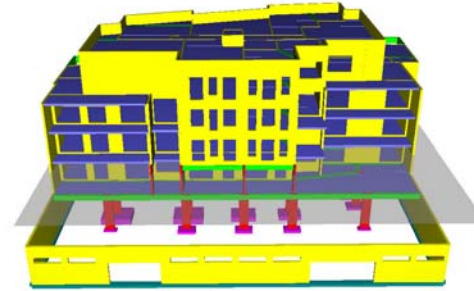
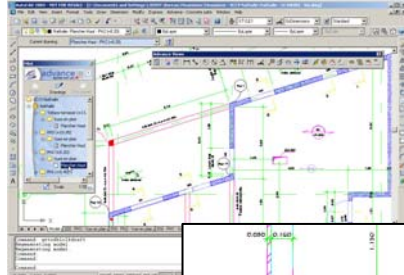
> ADVANCE / ARCHE



For David BOURGEOIS (Manager DO): « The main advantage of Advance+Arche is the high productivity. We also gain quality due to 3D».

> ADVANCE / ARCHE

Autres visuels



> ADVANCE / ARCHE