

GRENOBLE STADIUM

ETI Design Office
Grenoble, France



Project description

- **Location:** Grenoble, France
- **Architecture office:** Chaix & Morel Associés, Paris
- **Dimensions:** 144m x 191m
- **Specifications:** 20 000 sitting capacity, 13,000 square meters of offices, 65,000 square meters of extracted ground



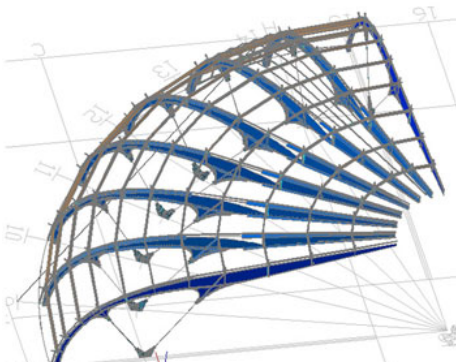
Business issues

- Create joints between curved welded and tapered beams.
- Get workshop drawings and NC-DSTV files from these elements.



The solution

- Precise and fast 3D modelling of the utter structure.
- Easy creation of DSTV files.



"Advance Steel was very useful thanks to the collision detection tool that enabled us to check nothing came between the various roof structure elements"

Mr Berger, ETI Project Manager

Business results

- Structural modelling achieved in a 3-month period
- Fast and easy DSTV files' creation

ADVANCE STEEL



More projects on www.graitec.com