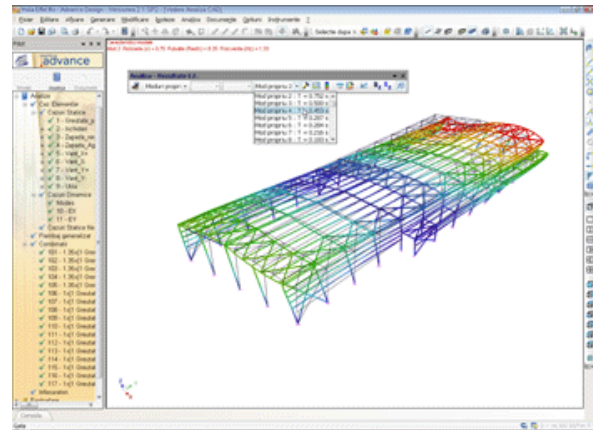


S.C. PAVIAL S.R.L.

Warehouse for concrete and tower
for machinery
Constanța, Romania

Project description

- **Location:** Constanța, Romania
- **Architecture office:** S.C. Pavial S.R.L.
- **Dimensions:**
 - Warehouse: 38x60 m and height of 6m
 - Tower: 5 levels (height of approximately 24 m); a main area of 9x8.1m (houses the main technological activity) and another area of 9x3.9 (which comprises vertical movement of personnel and concrete).



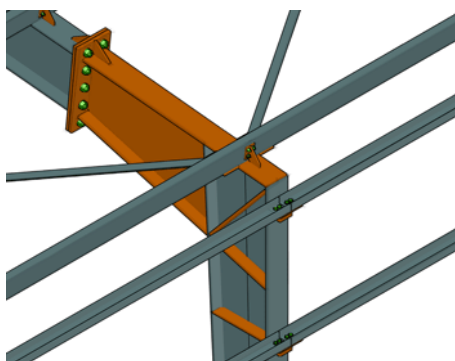
Business issues

- Controlling the influence of vibration developed by the cumulative weight of machinery and concrete.
- Changes due to technological basis modification.
- Beneficiary requirements were strict about the cost and material consumption



The solution

- Temporary dynamic analysis using Advance Design tools.
- The line position of similar joints was kept due to a multiple-connections configuration available in Advance Steel.
- Quick and easy analysis of variables, due to available tools such as steel expert or measurement tools.



“Import, export and synchronization functions of Advance Steel software have made possible the inclusion of the two models, tower and hall, in a single model, in which, with the help of 3D orientation made possible the examination of slopes and continuity of joints for the entire building.”

Business results

- Significantly time saving assigned to calculation.
- Optimized synchronization of models using 3D visualization.
 - Reducing costs and material consumption.