

## Customer

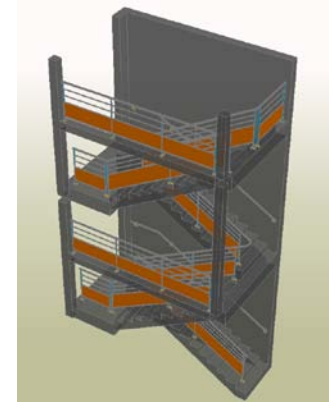
Ets J-C FASSLER  
Ste Marie aux Mines, France

## Business issues

- Creating railings and handrails attached to a concrete wall
- Architectural railings with filled panels
- Tight deadlines due to the delay of previous companies working on this project
- Manufacturing all plates using CNC workshop machines

## Business results

- Time saver for the modeling of the entire staircase + railings
- Changes are possible and easy
- Respected deadlines for the manufacturing and delivery at site



*"I was forced to change the entire 3D model (because of a modification on the concrete) while everything was finished, but this has been very easy and fast thanks to Advance Steel's functionalities".*

Olivier RASQUIER , Draftsman

