

OFFICE STAIRS

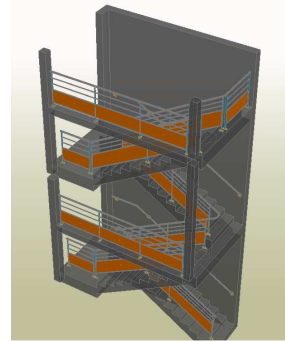
Ets J-C FASSLER

Ste Marie aux Mines, France



PROJECT DESCRIPTION

- Location: Chatenois (dept 67), France
- Architecture office: Cabinet WACH
- Dimensions: Straight parallel stairs with 2 intermediate platforms
- Specifications: Railing and handrail attached to the wall for the Hartmann's company headquarters



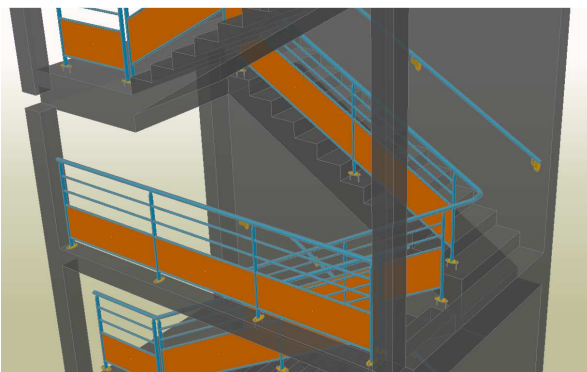
THE CHALLENGE

- Creating railings and handrails attached to a concrete wall
- Architectural railings with filled panels
- Tight deadlines due to the delay of previous companies working on this project
- Manufacturing all plates using CNC workshop machines



THE SOLUTION

- Representation of the concrete due to the possibility to create a 3D solid
- Use of the automatic railing macro followed by specific adjustments to get the desired architectural result
- Time saver due to all drawings and BOMs created automatically
- NC-DSTV files automatically created for all plates



"I was forced to change the entire 3D model (because of a modification on the concrete) while everything was finished, but this has been very easy and fast thanks to Advance Steel's functionalities."

Olivier RASQUIER,
Draftsman, Ets I-C FASSLER

USERS' BENEFITS

- Time saver for the modeling of the entire staircase + railings
- Changes are possible and easy
- Respected deadlines for the manufacturing and delivery at site

ADVANCE STEEL