

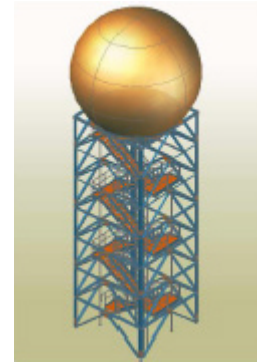
WEATHER RADAR TOWER

CONFERDO GmbH
Esterwegen, Germany



Project description

- **Location:** Bermuda
- **Dimensions:** 20 m high steel framework tower
- **Specifications:** Weather radar built to withstand hurricane velocity winds up to 300 km per hour; total weight of 32 tons



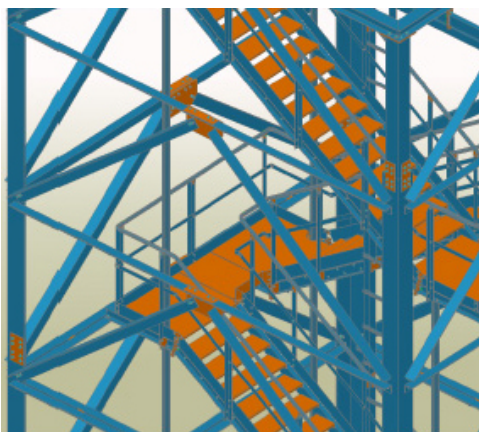
Business issues

- Assembly overseas
- Bearing framework
- Each single unit had to be under 6 m long for transportation



The solution

- Precise and automatic derivation of Bills of materials for the construction
- Sending NC files through a fiber optic cable from the construction to the fabrication



„GRAITEC’s Advance Steel does a great job in automating and updating all part lists.“

Rainer Bach and Georg Stichternath,
Managers

Users’ benefits

- Collision control on screen
- Virtual snapshots of the assembly for construction personnel
- 3D Modeling

ADVANCE STEEL