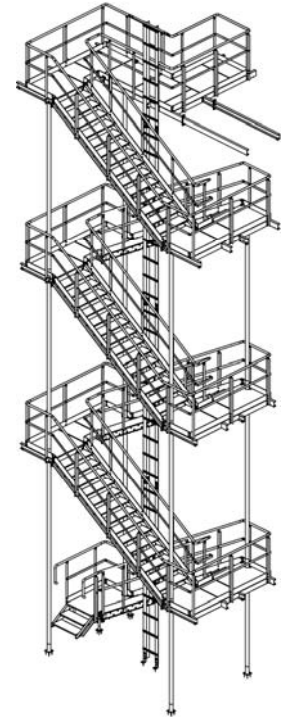
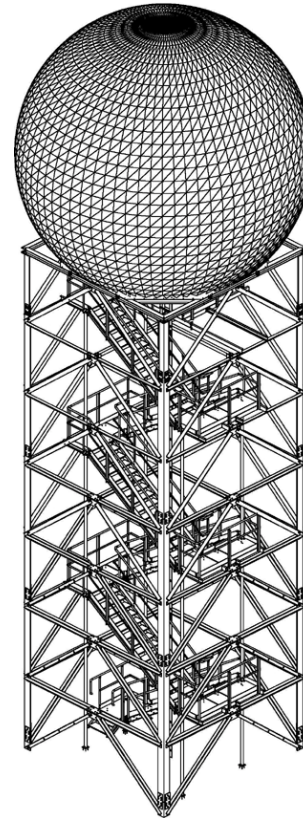


Weather radar - Bahamas

This modern and powerful weather radar is built to allow detailed weather forecasts for Bermuda. The supporting framework has a stairtower access and was built to withstand hurricane velocity winds.

Conferdo GmbH & Co. KG

- > Specialist for construction of supporting frames for wind energy plants, mobile network operators and frames for promotional and technical facilities
- > Planning, fabrication and operable delivery of buildings
- > Example structures: proving ground of Mercedes Benz, DEA plant construction refinery



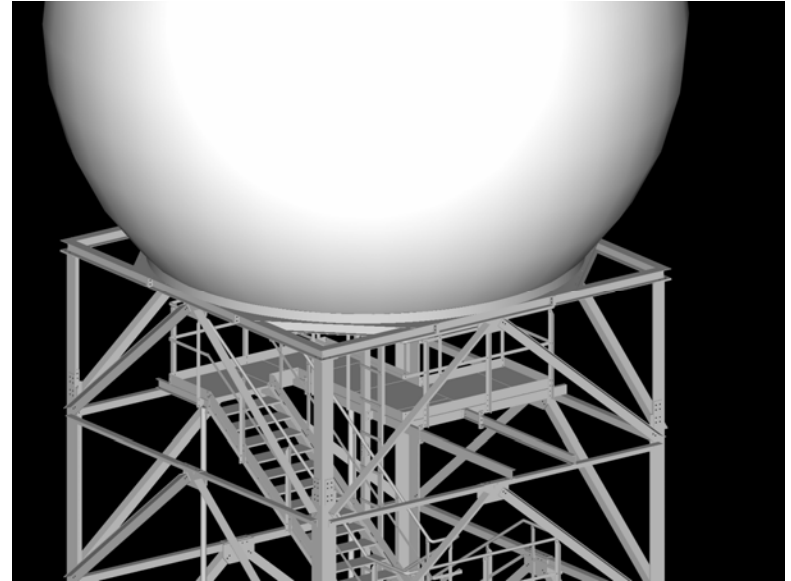
> ADVANCE

Challenge

- > Precise planning for local production and assembly in Bermuda

Solutions

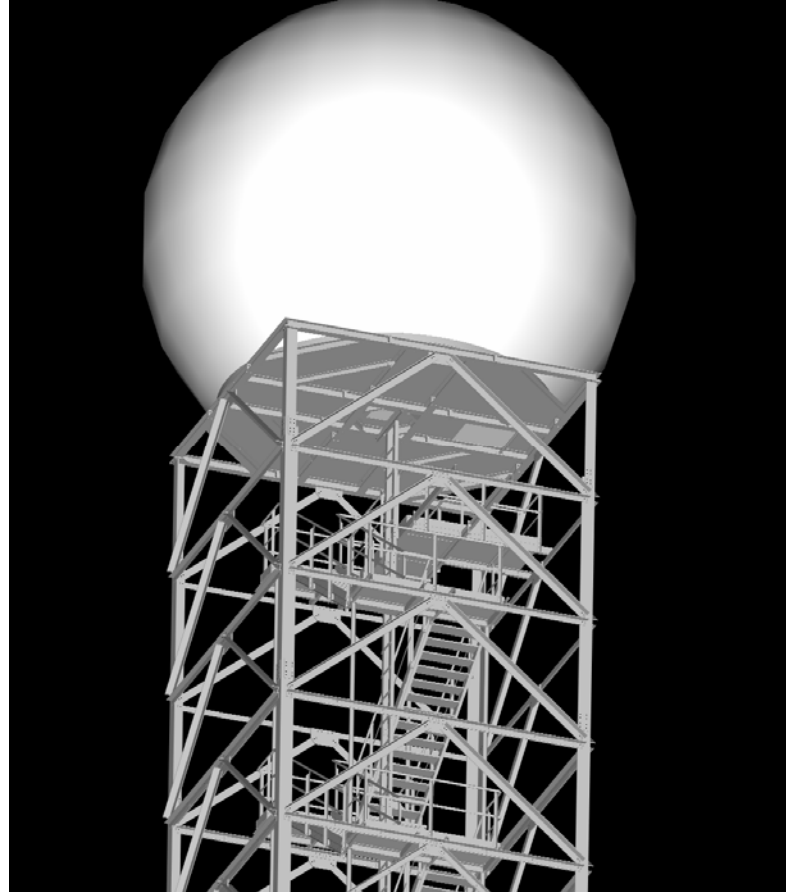
- > Software : **Advance – Steel Suite**
- > Secure and automatic creation of object lists
- > Collision control on screen
- > Transmission of NC-data from the construction office to production by fiber optic cable
- > Virtual snapshots of the assembly for construction personnel



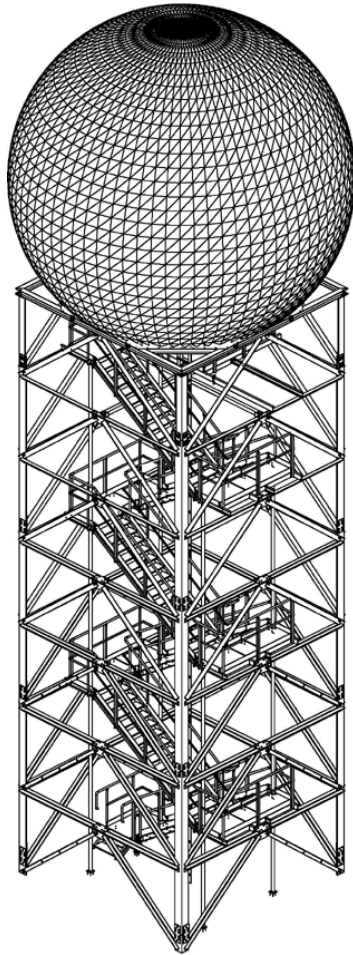
> ADVANCE

Conferdo is working since 2003 with Advance - Steel Suite

- > Steel frame tower with height of 20m and weight of 32 to
- > Bears up against wind speeds up to 300km/h
- > Advance automatically and properly creates object lists from the construction



> ADVANCE



Conferdo is a specialist for
frame construction

> ADVANCE