

RESTORATION OF WASTE INCINERATOR

Aciercon s.r.o.
Kosice, Slovakia



Project description

- **Location:** Brno, Czech Republic
- **Architecture office:** Aciercon s.r.o., Brno
- **Contracting authority:** PSG a.s., Zlin
- **Dimensions:** W=30 m, l=30 m, h=30 m
- **Specifications:** Steel Frame Structures for Heavy Technological Equipment
- **Description:** Total weight = 530 tons. It contains main carrier construction for the kettles.



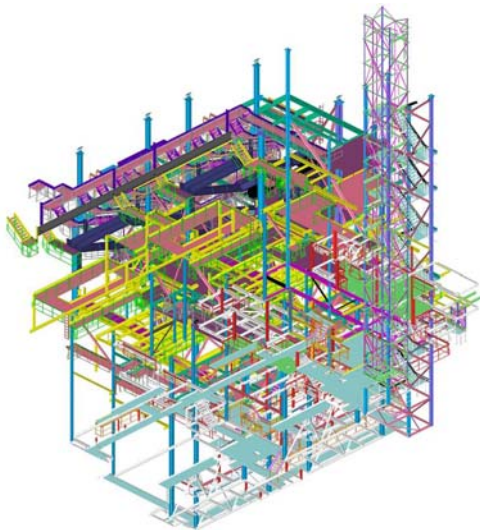
Business issues

- Multi-floors steel structure
- Very complicated spatial relationships between steel structures and technological equipment



The solution

- Display the complete 3D structure of only selected floors
- Easy-to-use solution using collision detection within the final checking.



„Advance Steel is suitable for such a complicated structure and was the perfect solution for this waste incinerator.“

Ing. Oldrich Balsinek, Managing Director

Business results

- Simple verification using the 3D rendered view
- Workshop drawing generated in line

ADVANCE STEEL



More projects on www.graitec.com