

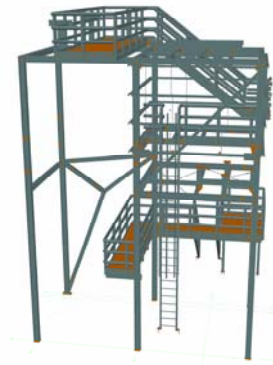
FRAMEWORK FOR A FILTER SYSTEM

AHP Arikan Ibrahim Konstruktionsbüro für
Stahlbau
Untermeitlingen, Germany



Project description

- **Location:** Frankfurt, Germany
- **Specifications:** Total weight of 10 tons



The challenge

- Frame placed in a building that pokes out of the roof.
- Need to plan a waterproof sealing for the roof covering
- Frame above the roof to be encased
- Need to create bay rails



The solution

- Possibilities of fast modifications and adjustments
- Fast drawing derivation
- Collisions check



"Advance Steel increased our productivity by 75% thanks to the possibilities of fast modifications and adjustments along with the fast drawing derivation and the collisions check that allowed us to finish the construction in a short time"

Mr. Arikan, Managing Director

Users' benefits

- Productivity increased by 75%
- Fast modelling with joints
 - Collisions check
- Fast drawing derivation

ADVANCE STEEL